

NAVISense Vest

Intelligent Multisensory Assistive Vest for Safe Navigation and Awareness

SCAN ME!



WHY IT MATTERS

Limited obstacle awareness can increase collision risk and reduce independence in daily navigation.



NAVISense supports:

- Visually impaired users
- Elderly people with mobility difficulties
- Low-visibility workers
- Rescue and emergency teams

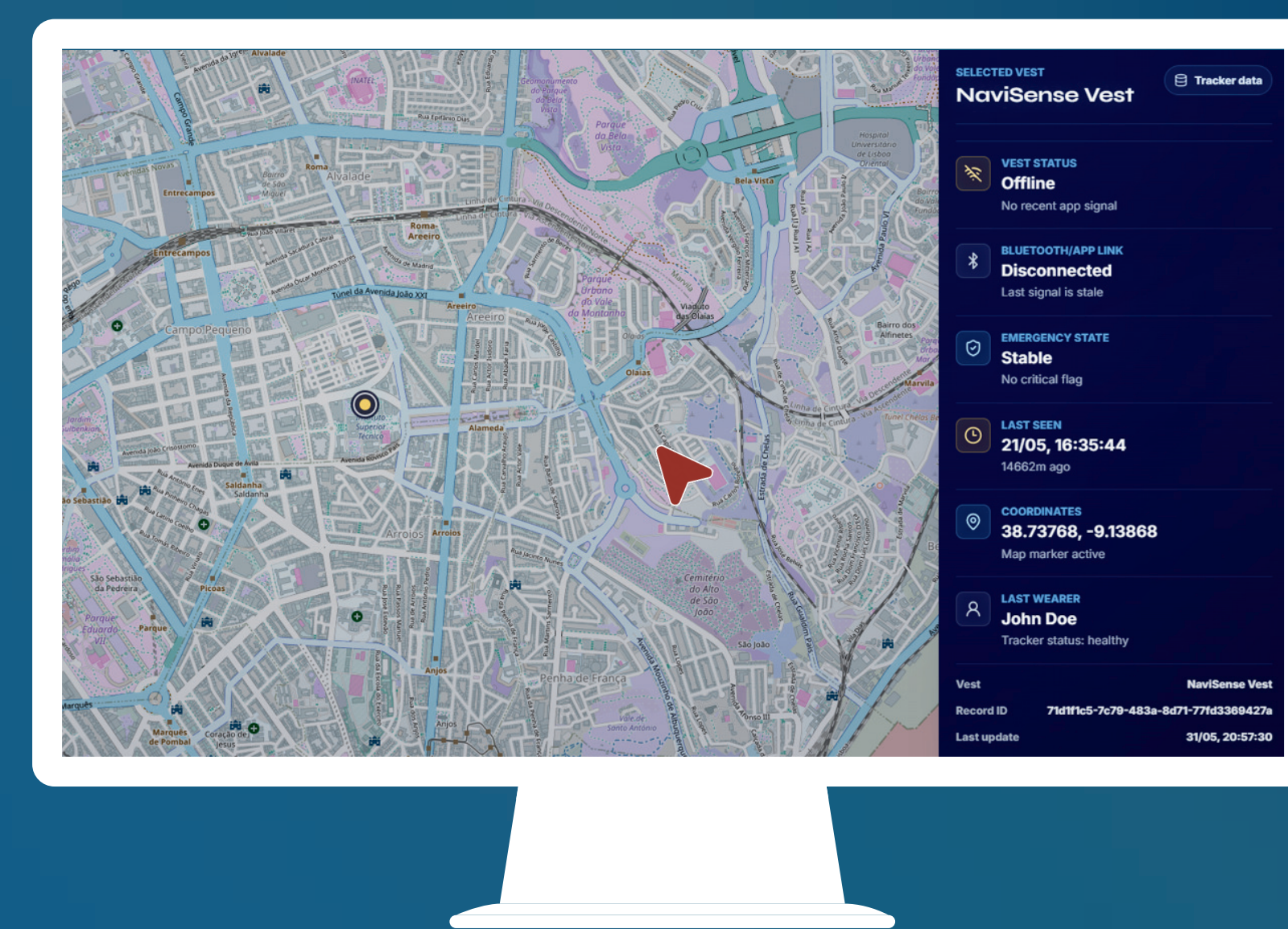
BEYOND THE CANE

A traditional white cane is not enough for full obstacle awareness, as it mainly detects ground-level obstacles.






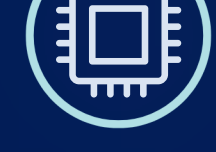
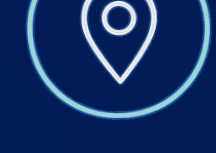


NAVISense Vest complements the cane by detecting suspended and waist-height hazards.

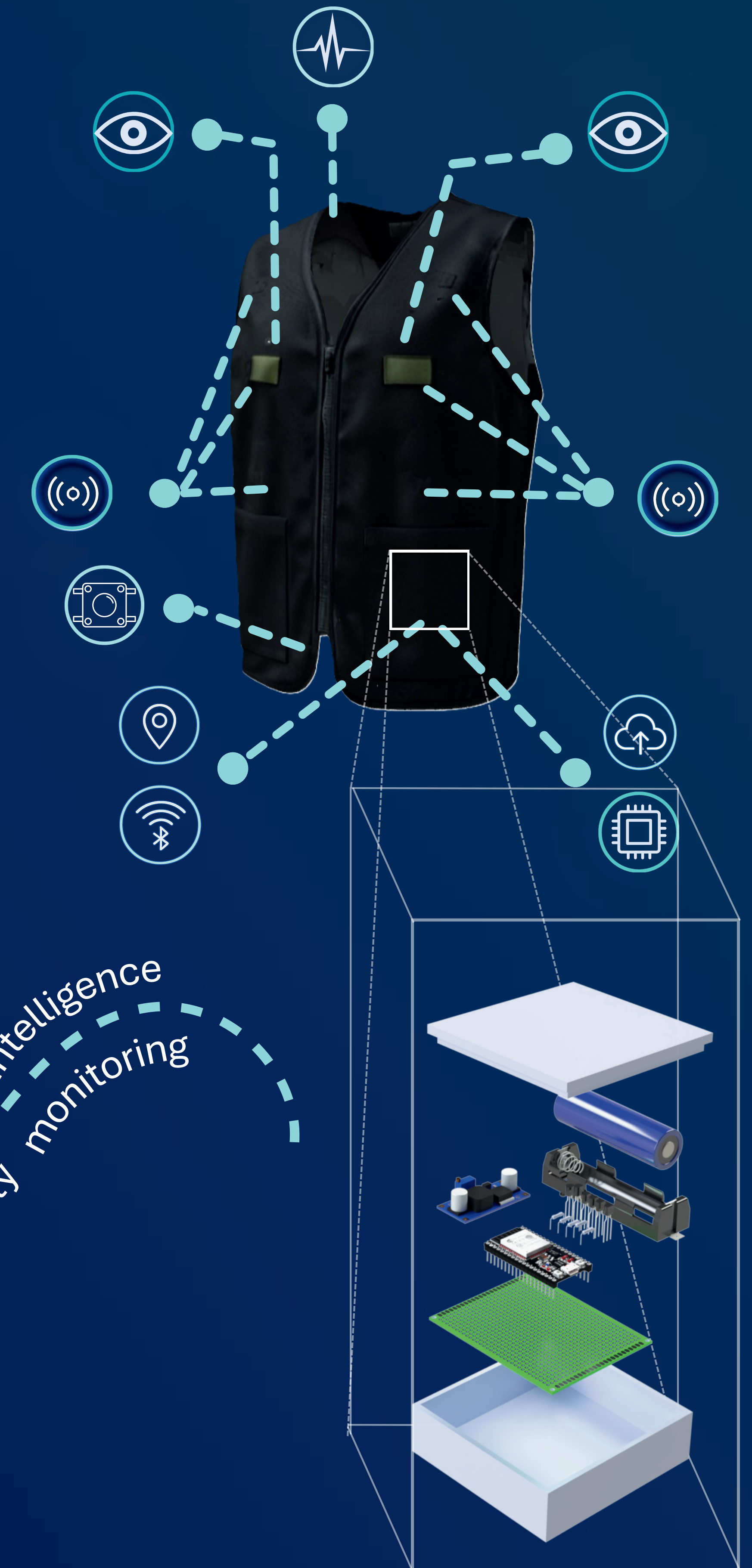
LIVE MONITORING



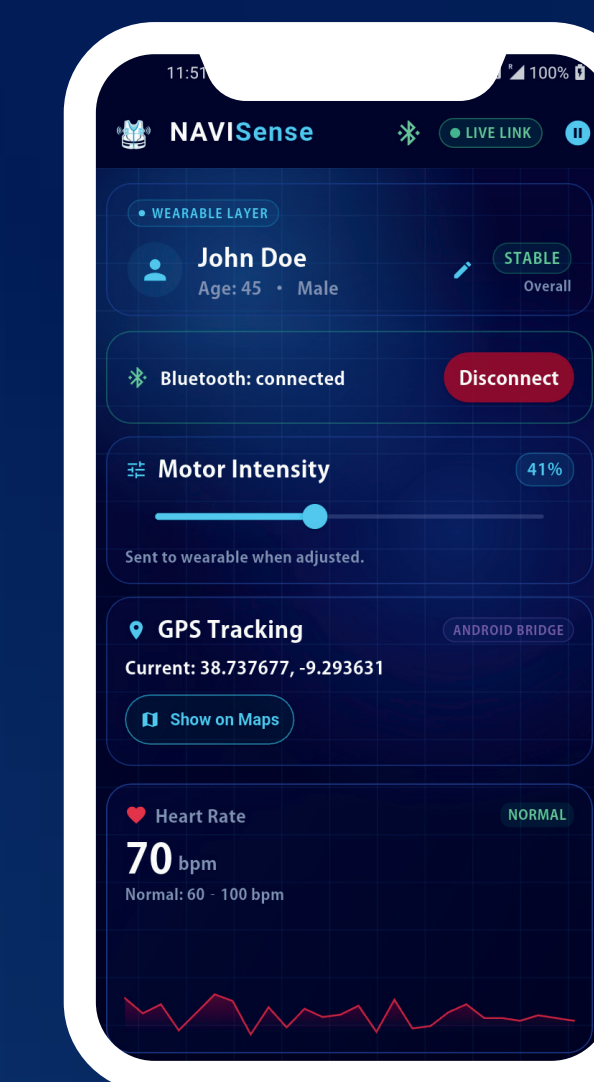
- Live user location tracking
- Emergency SOS alerts
- Real-time system status
- Cloud data synchronization

OUR SOLUTION

-  2 ToF 3D sensors scan the environment with a range of up to 3.5 m and a 60° horizontal and vertical fov.
-  6 vibration motors alert the user
-  Heart rate sensor monitors the user's physical state
-  Embedded control unit processes and manages all system components in real time
-  GPS module enables location tracking and navigation
-  Bluetooth connection sends data to the mobile app
-  Instant SOS alert button



 ALWAYS CONNECTED



From embedded intelligence to real-time safety monitoring

Empowering Independence Enhancing Safety

Team



Francisco Mariquitos



Raquel Barroso



Daniel Khom'yak



David Reimer



Tiago Pinto



Frederico Pinto

