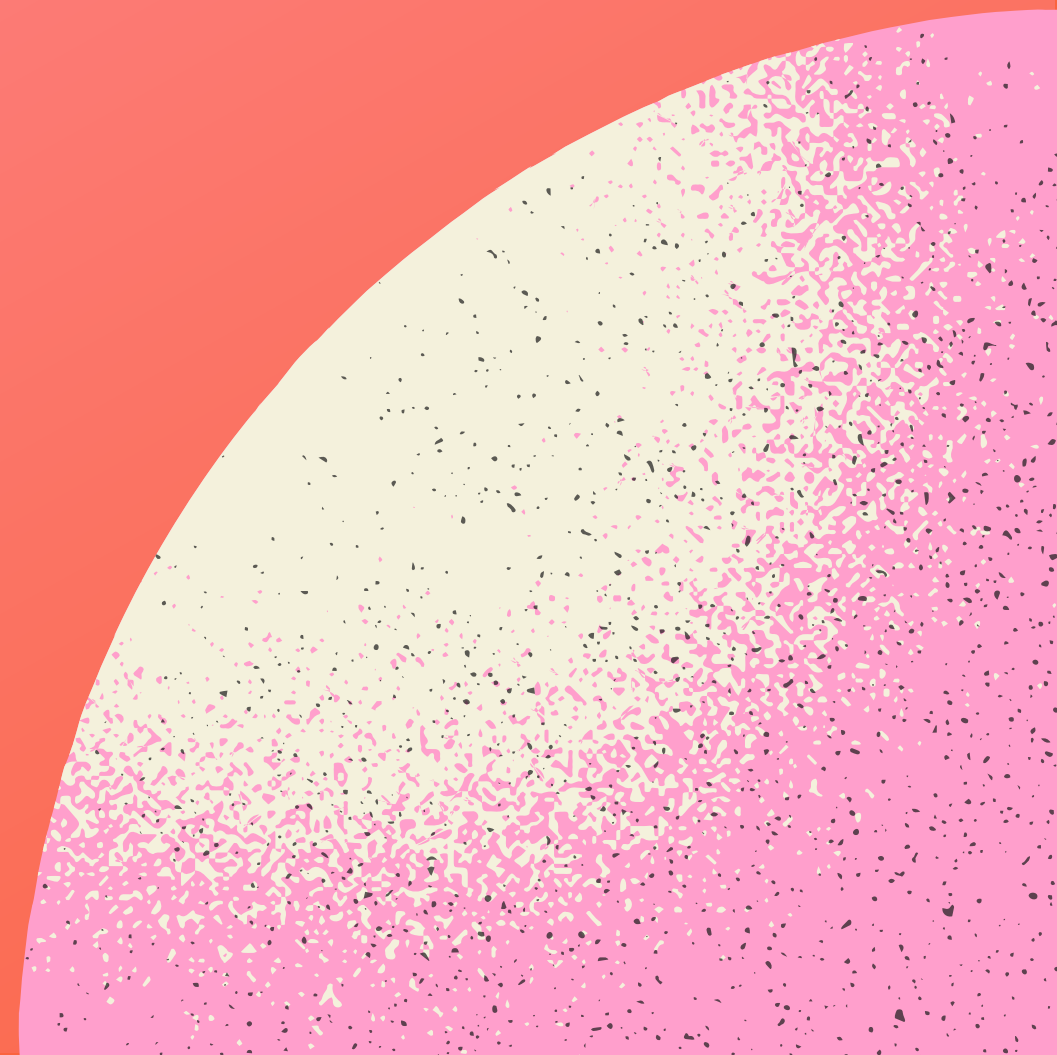


Panacea

STRUCTURAL HEALTH MONITORING



The Team



Daniel Ferreira

Technical

- Member of IStrain
- Experience with structures, mechanics



Gustavo Curado

Business

- Member of TLMoto
- Experience with structures



Rui Costa

Design

- Member of TFC



Tomás Serafim

Technical

- Member of IStrain

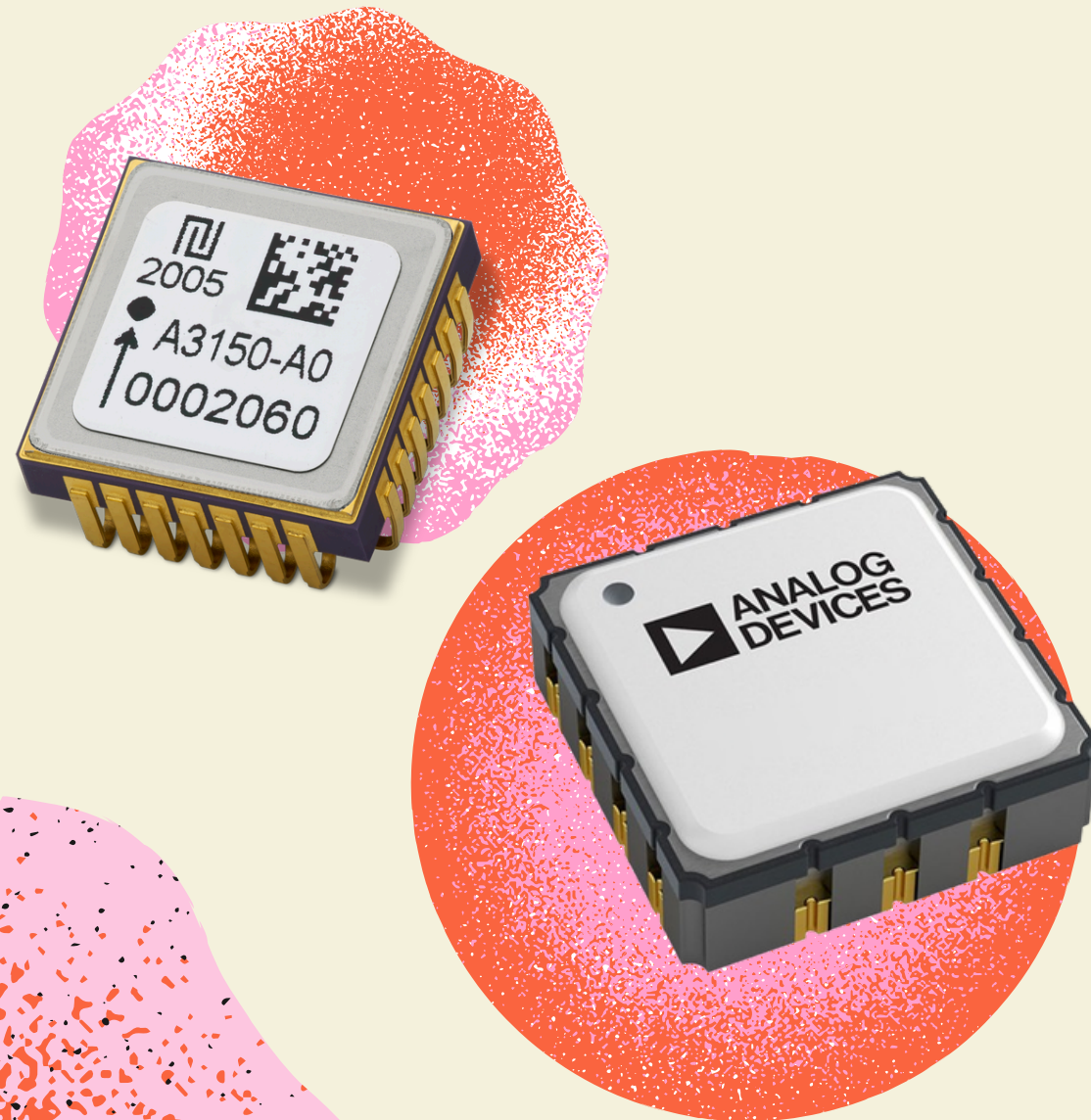


Structural monitoring doesn't need to be old fashioned and sluggish.

We're here to fix that.

- Automated structure monitoring tool
 - Cheaper than traditional methods
 - No need for people on site

Technology Rundown



Sensors

High precision MEMS accelerometers installed at top of tall buildings or other structures measure natural oscillation frequency of the structure.

Algorithm

Sustained downward shifts in natural frequency, confirmed across multiple measurements, flag a potential reduction in structural stiffness

What we need besides that

Cloud infrastructure, structural and software engineering expertise, academic partnerships, and an accumulating dataset of real-world structural vibration data.

Our Customers and Key Partners

Customers will be reached via direct B2B sales and institutional outreach, as well as engineering and construction trade fairs. Partnerships are crucial to secure clients.

These institutions are our most important partners, since they can help with development at early stages and legitimize the product.



Government bodies

IHRU, Câmaras Municipais

Academic and research institutions

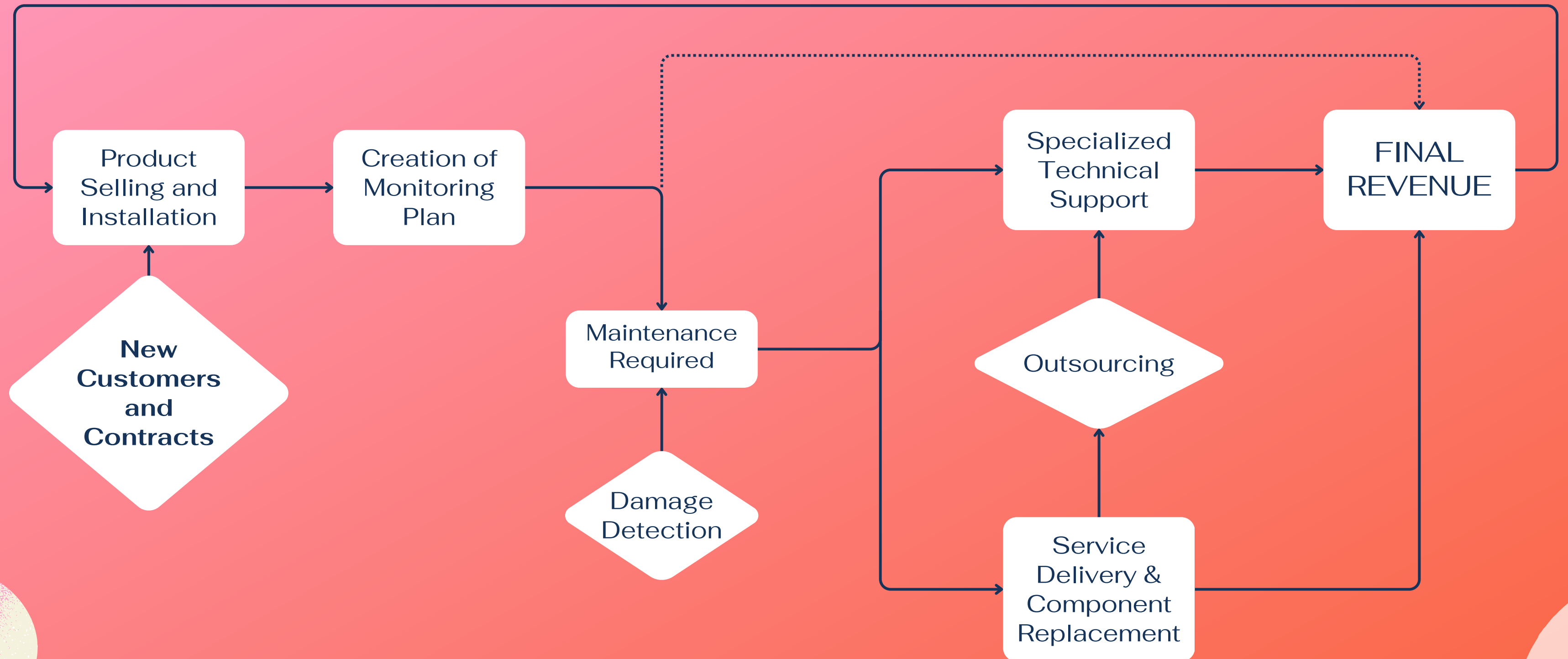
LNEC, universities, CERIS



Civil engineering companies

**Companies managing buildings and
condominium administrators**

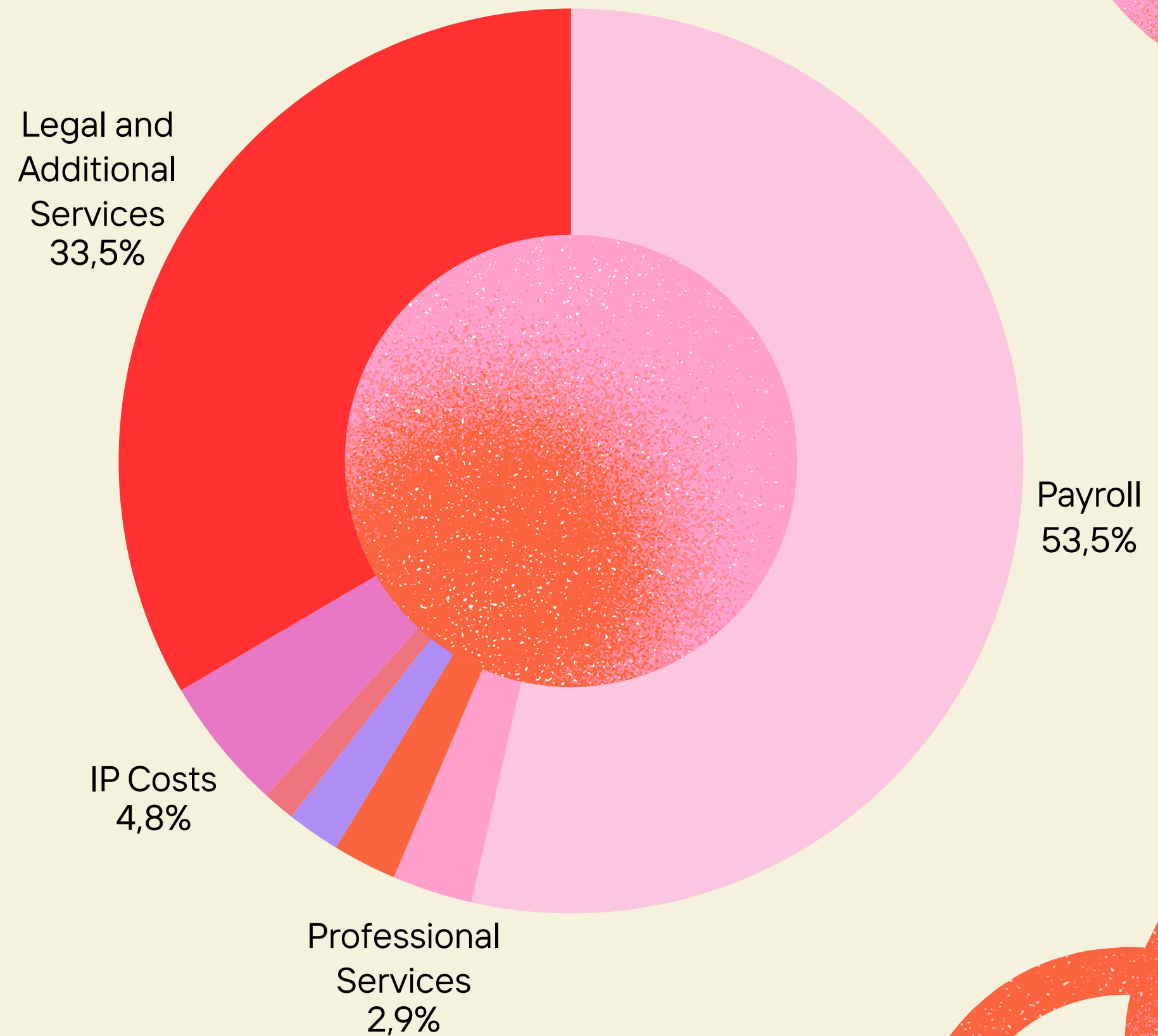
How we'd make money



Cost Structure

Most of the cost is employee's salaries. This value will increase after the initial phase.

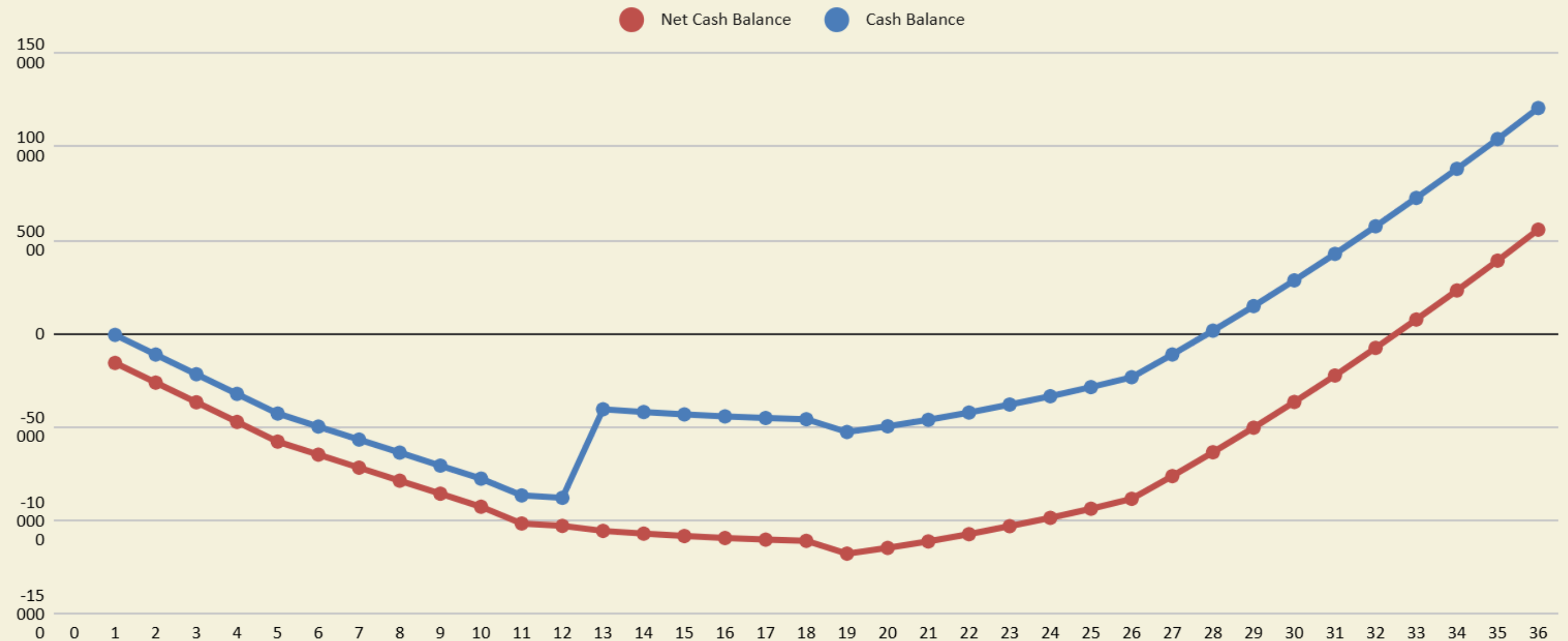
As the number of users increases, tech costs increase due to cloud infrastructure cost.



Financial Timeline

M Milestones

- 0 Start
- 5 MVP Ready
- 10 Certification
- 11 Patent
- 12 Pilot Launch
- 18 Scalability



The background is a solid light pink color. In the top-left and bottom-right corners, there are decorative wavy lines. These lines are composed of many small, overlapping circles, creating a shimmering, textured effect. The lines curve and flow across the corners.

Thank you!